

LAPRoad

(Lighting Analysis Program for Road)

1.



2.



-



-

-

:

(Overall uniformity):

(Longitudinal uniformity):

■ (Veiling Luminance):

가

.

■ 가 (Relative threshold
Increment, TI):

가

가

3.CIE

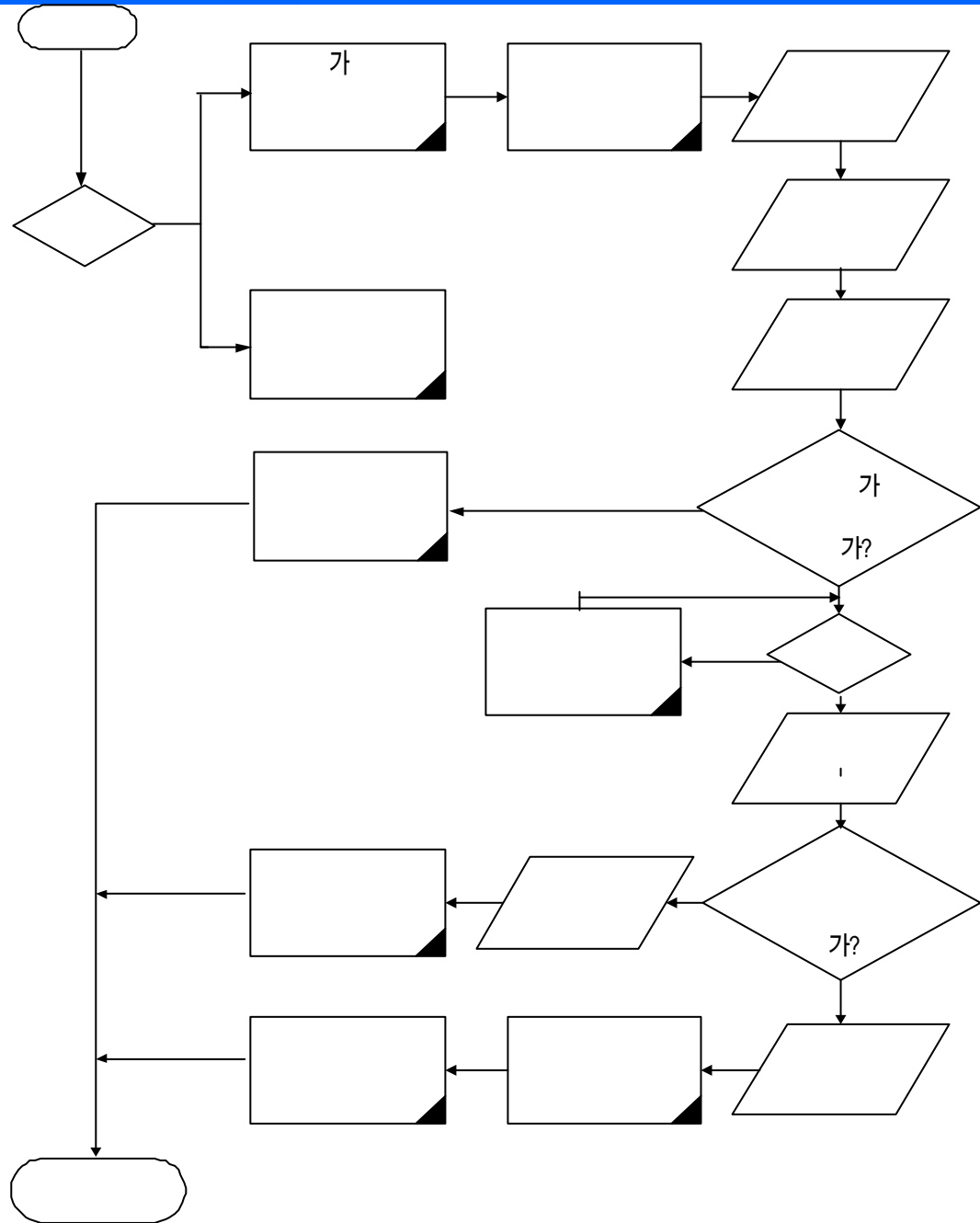
1)

	L_{av} [cd/m ²]	U_0	TI[%]	U_1
M1	2.0	0.4	10	0.7
M2	1.5	0.4	10	0.7
M3	1.0	0.4	10	0.5
M4	0.75	0.4	10	NR
M5	0.5	0.4	10	NR

2)

가 , 가 :	M1 M2 M3
:	M1 M2
, , :	M2 M3
:	M4 M5

4. LAPRoad



5.



1)



(가, 가?)

-

: 0

-

:

(

:

:

)



-

:

1/4

-

:



-

, ,



-

(: Kilolumen)

-

-

(:180 :0)

- tilt

- spin





-

-



- 0

2)

- IES Format

3)

- CIE
- R1 ~ R4, N1 ~ N4
-

6.

-
-
-
-
-
-
-
-

가 (Threshold Increment, TI)
(Veiling Luminance, L_v)