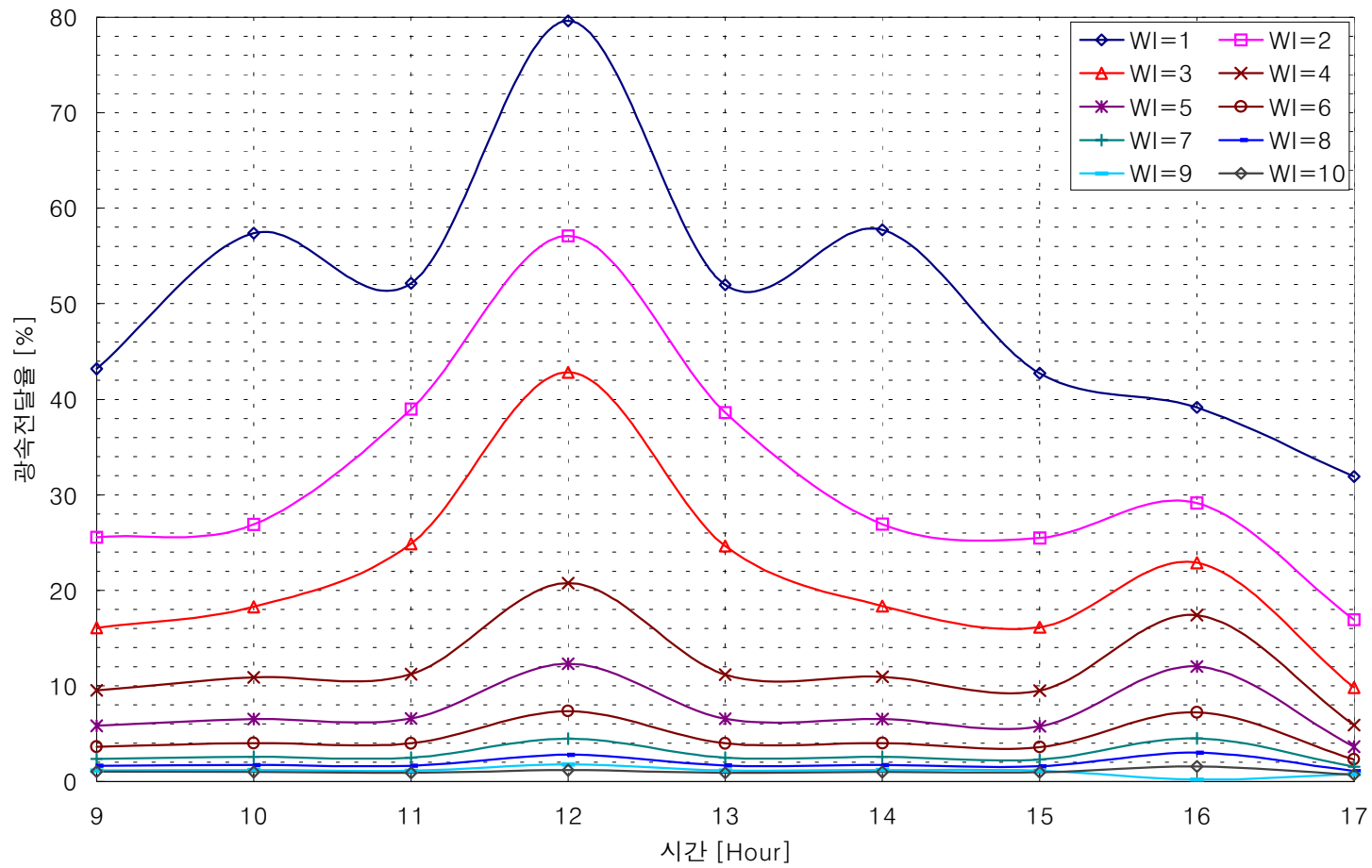
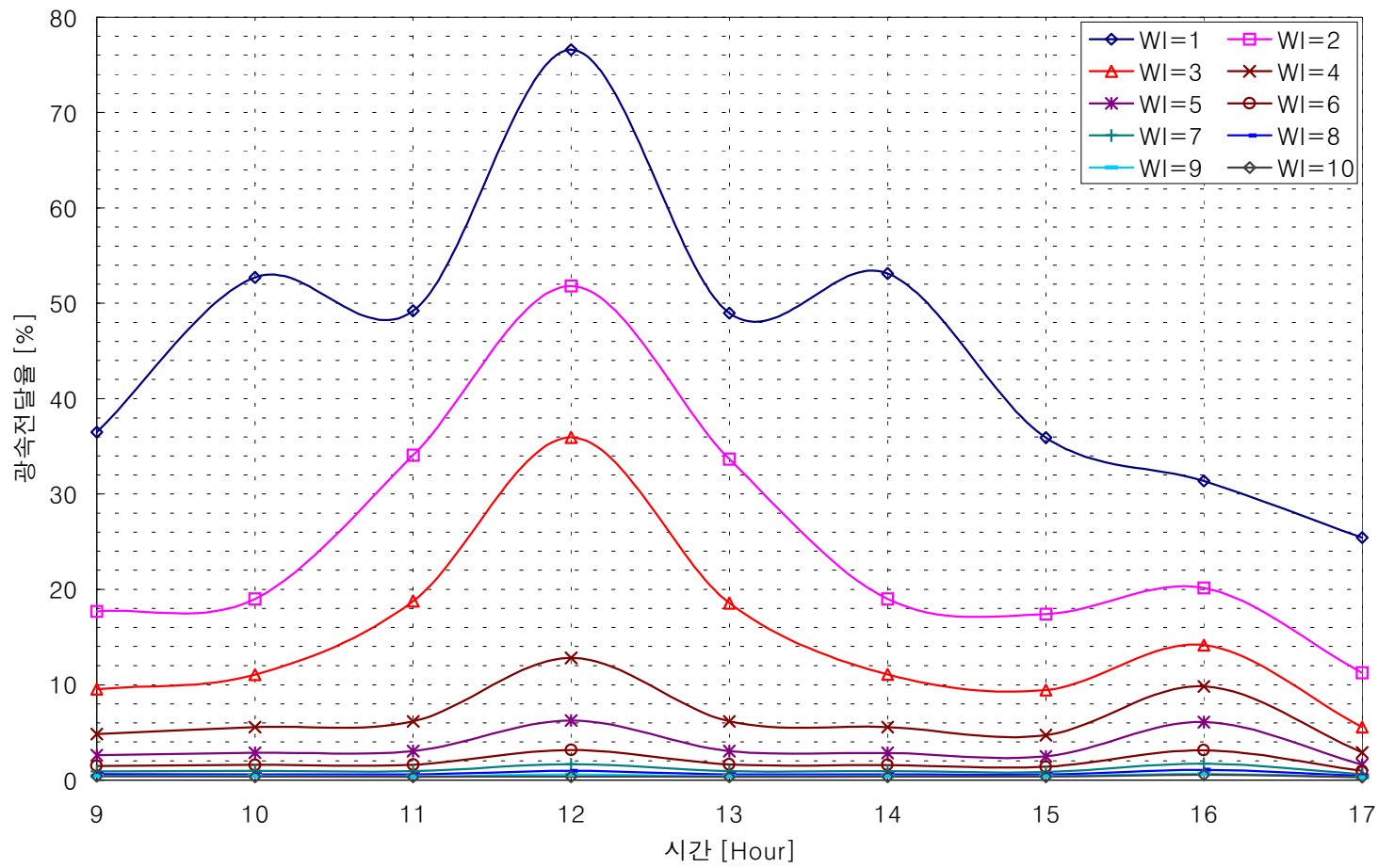


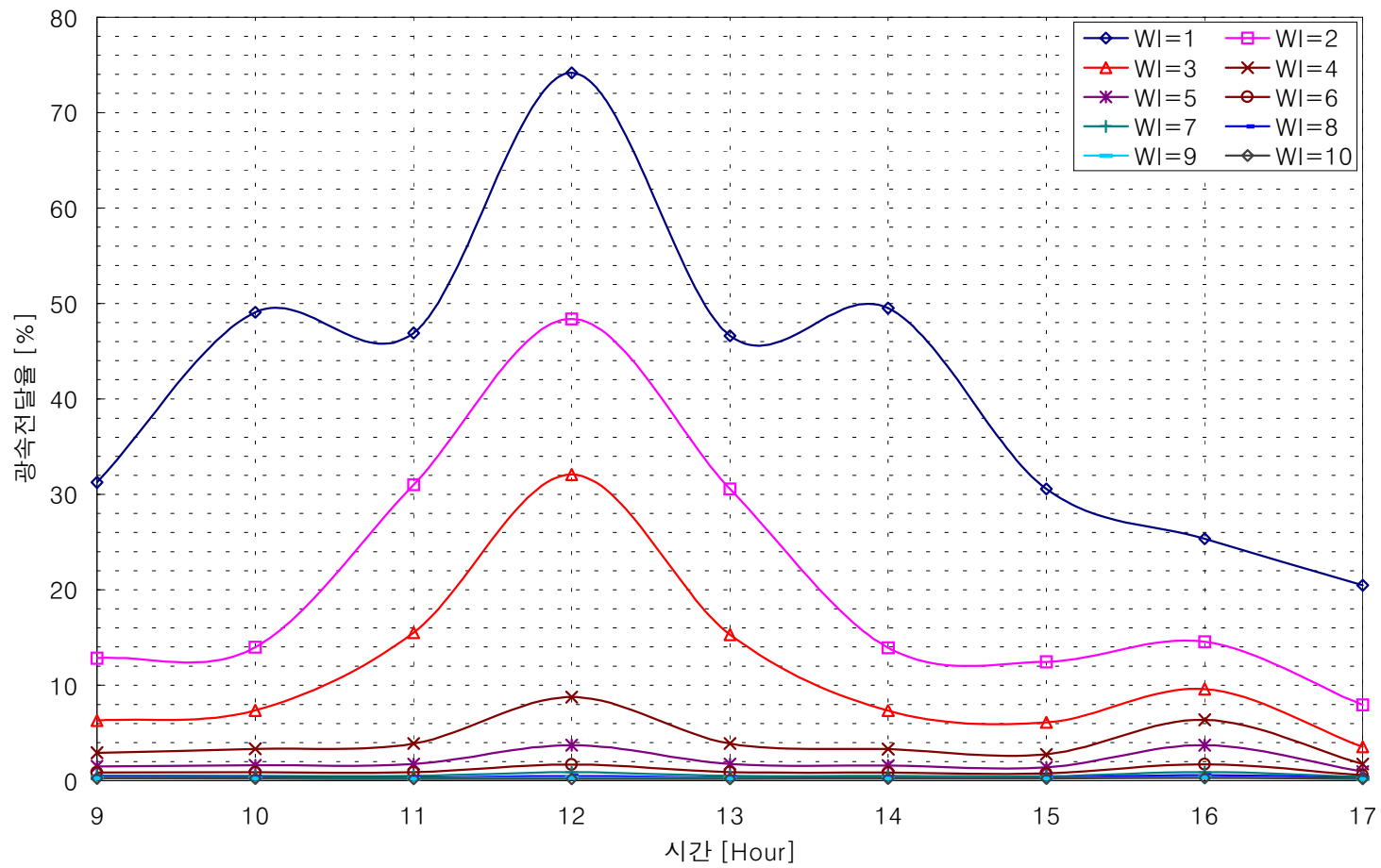
부록
수직장방향 광덕트의 광속전달율



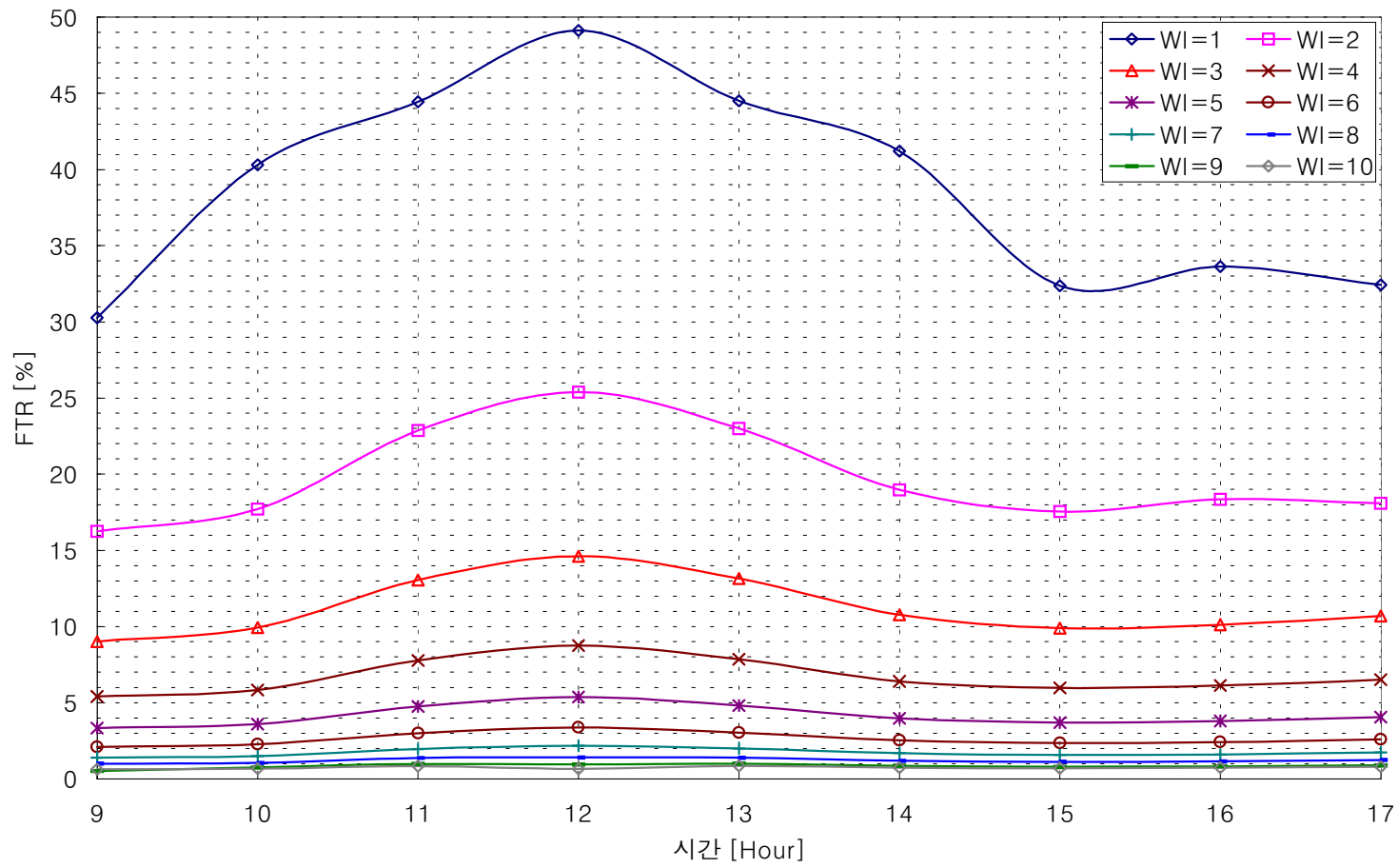
1. 6월 21일 반사율 90%



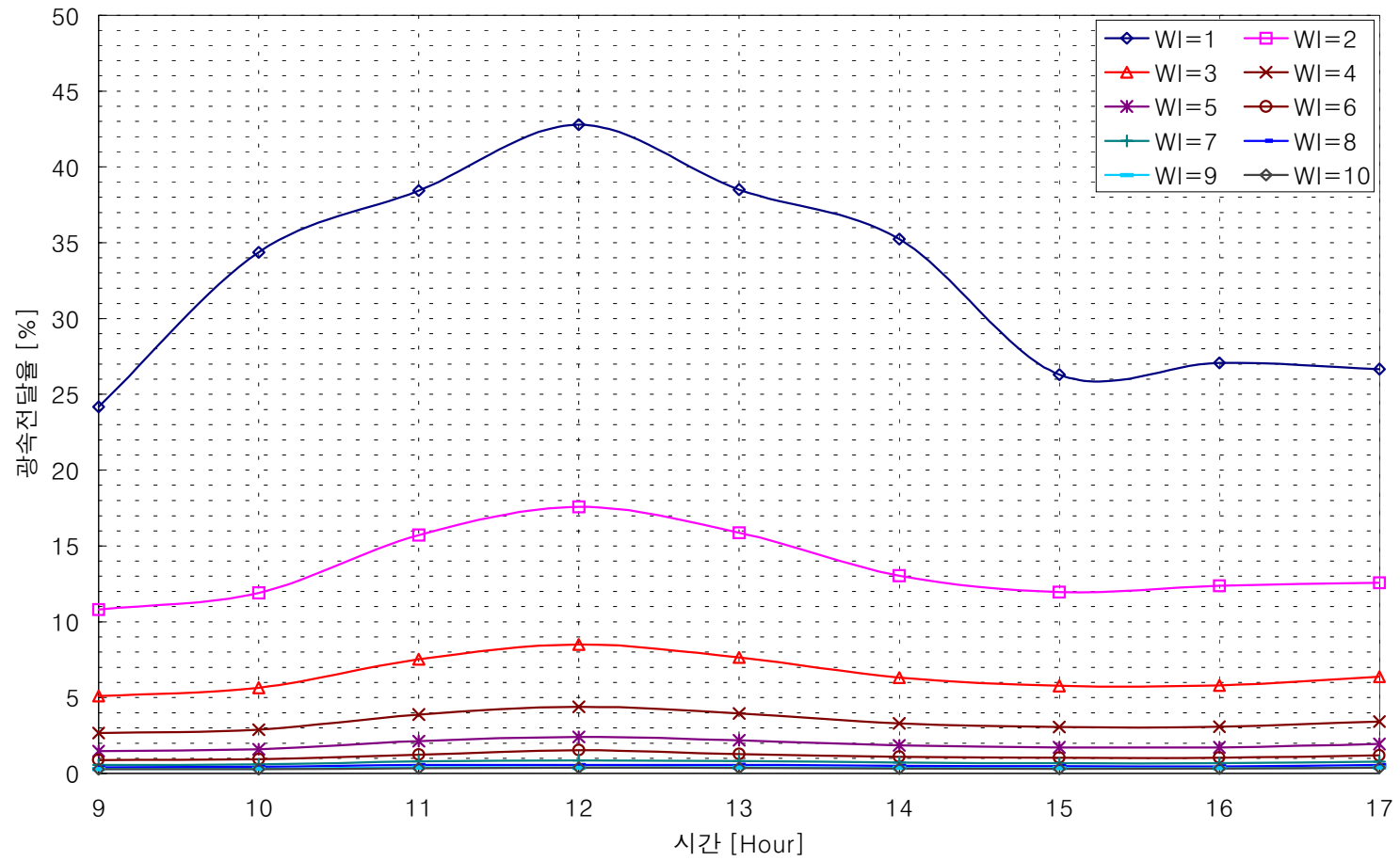
2. 6월 21일 반사율 80%



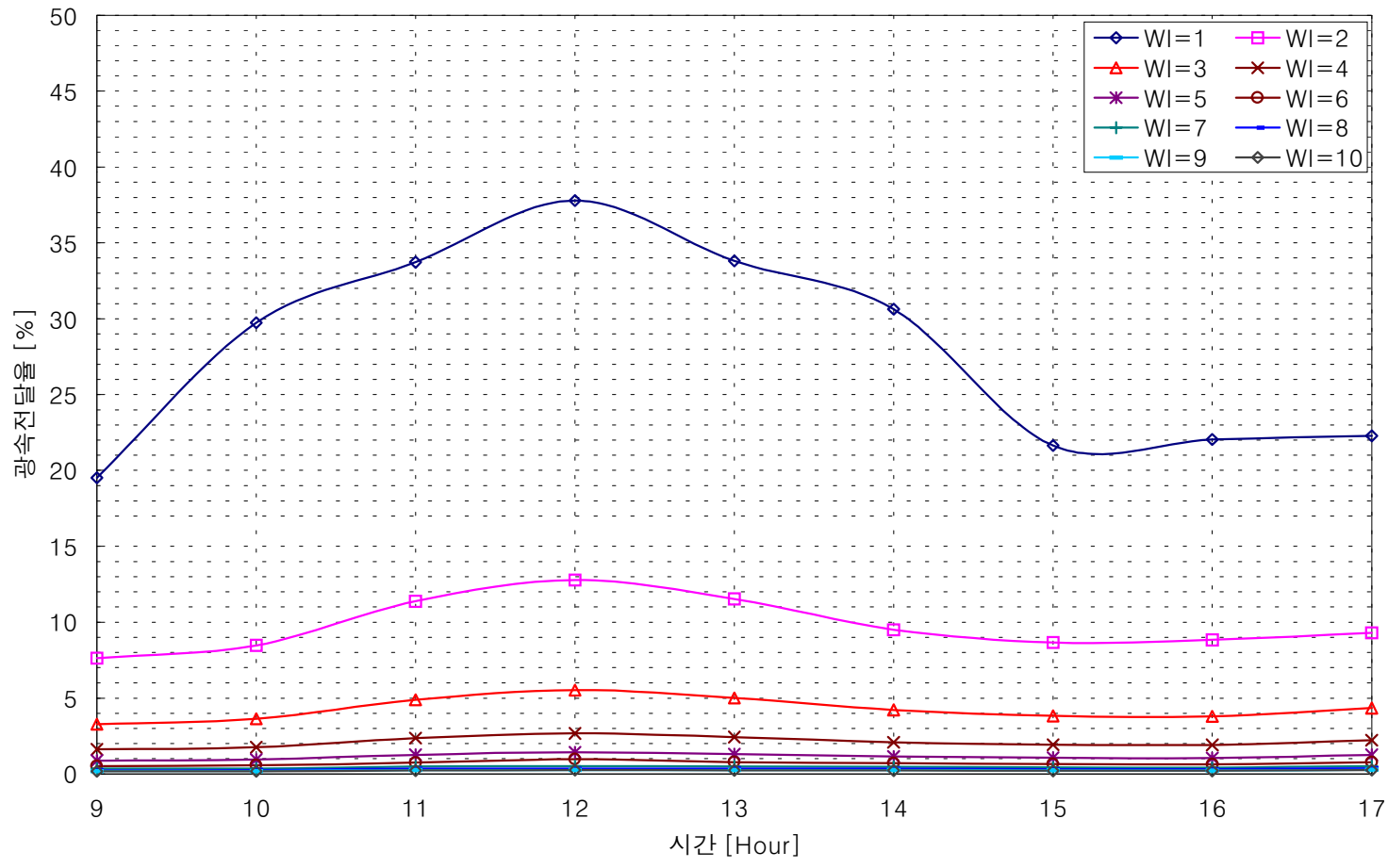
3. 6월 21일 반사율 70%



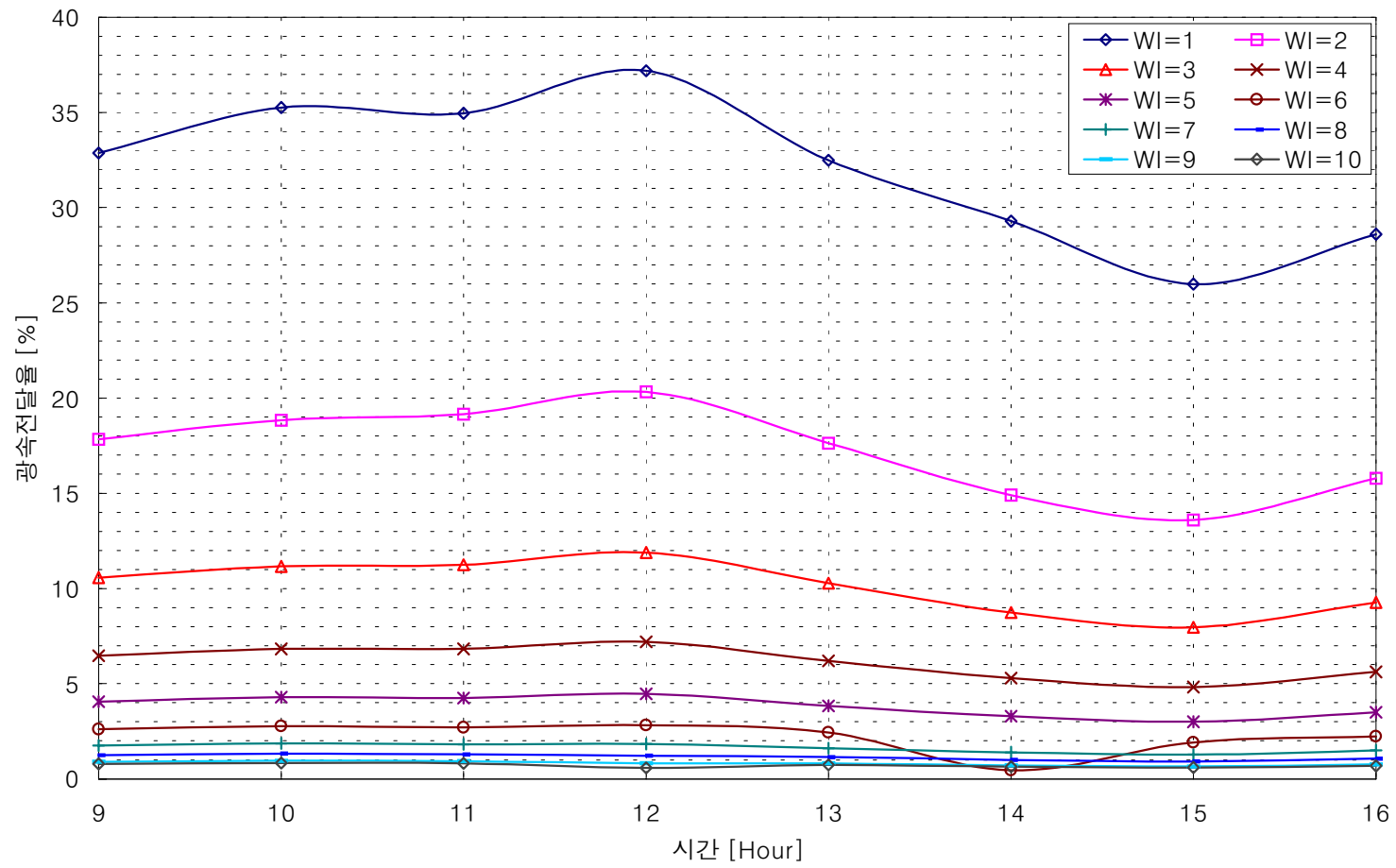
4. 9월 21일 반사율 90%



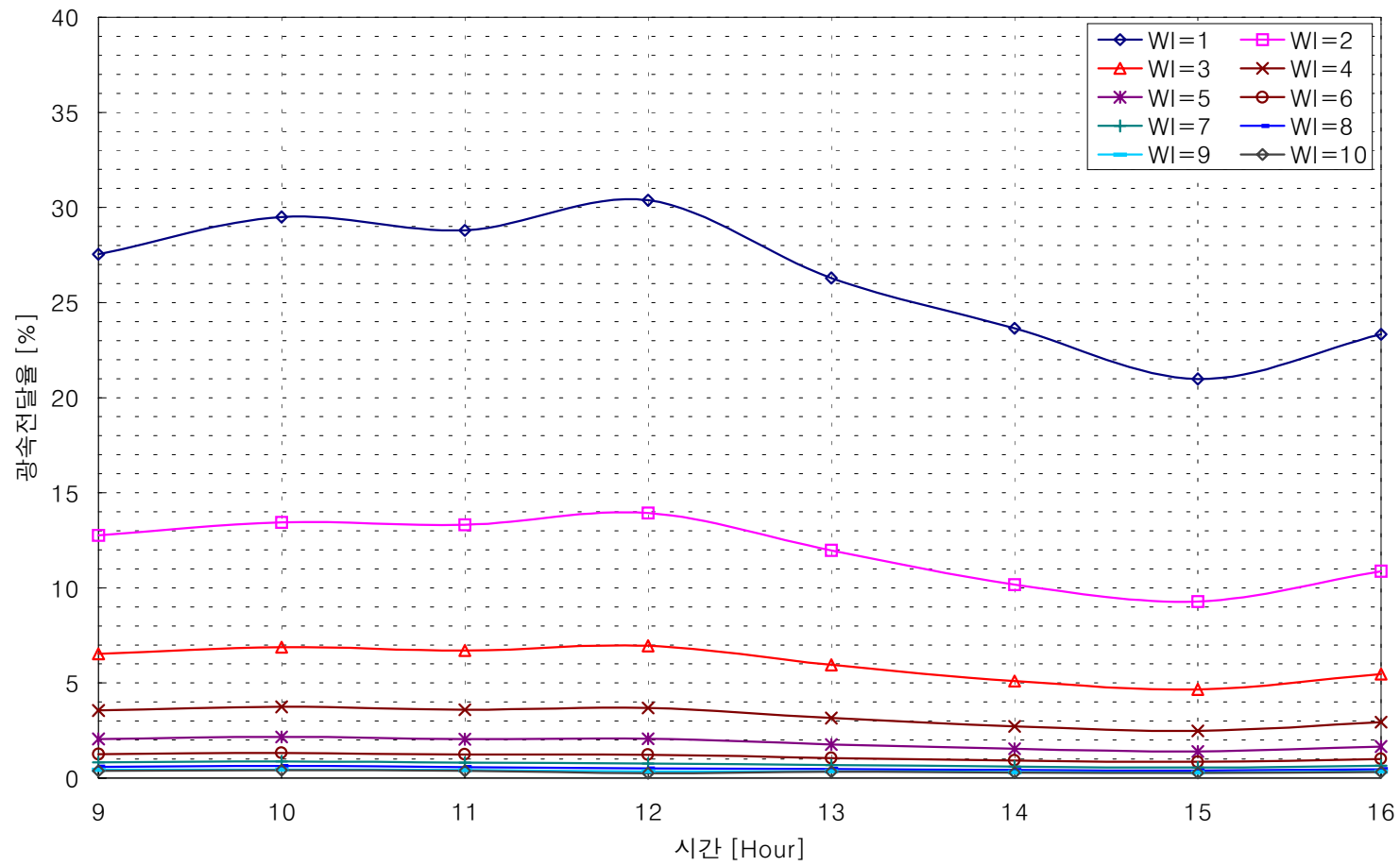
5. 9월 21일 반사율 80%



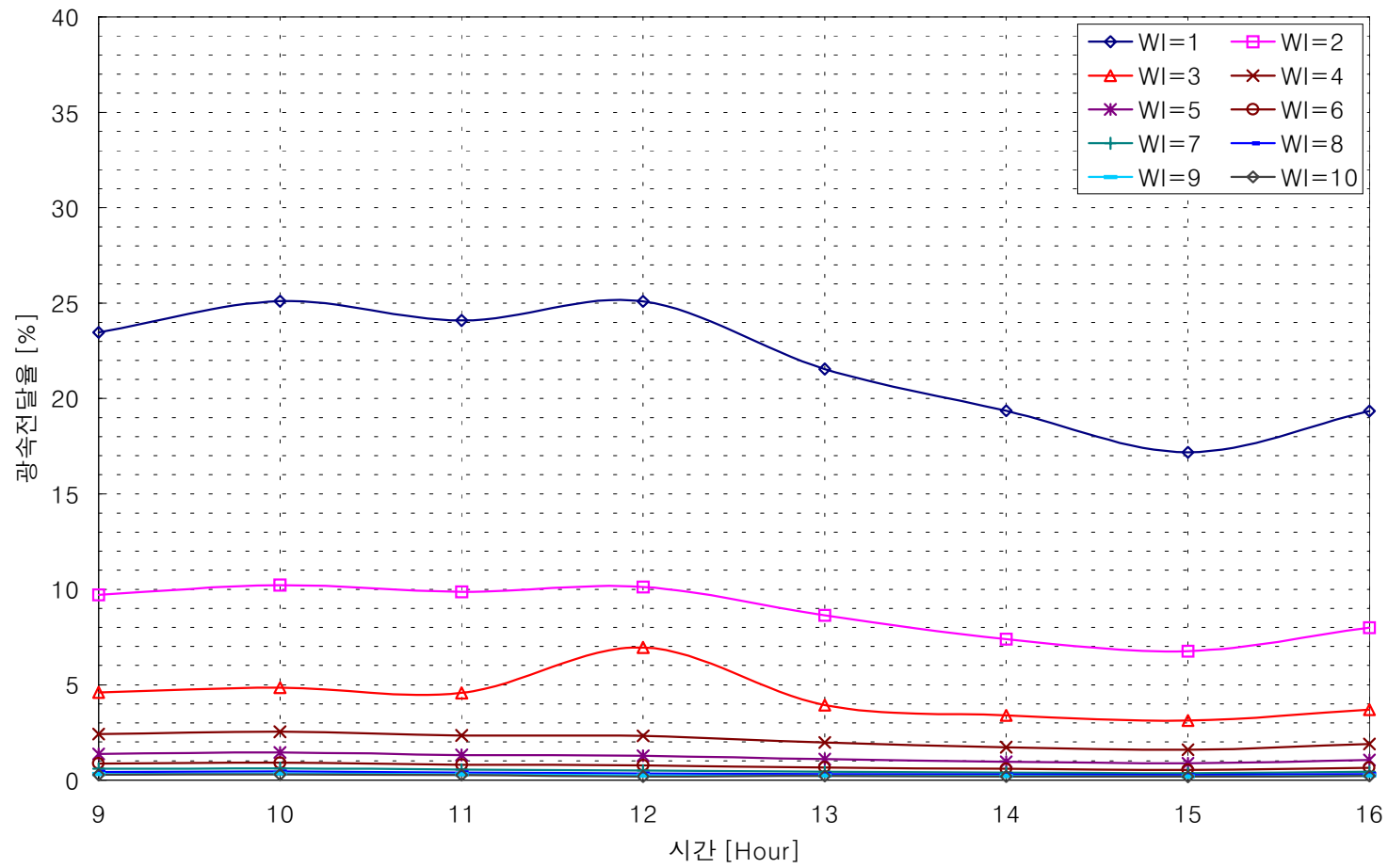
6. 9월 21일 반사율 70%



7. 12월 21일 반사율 90%



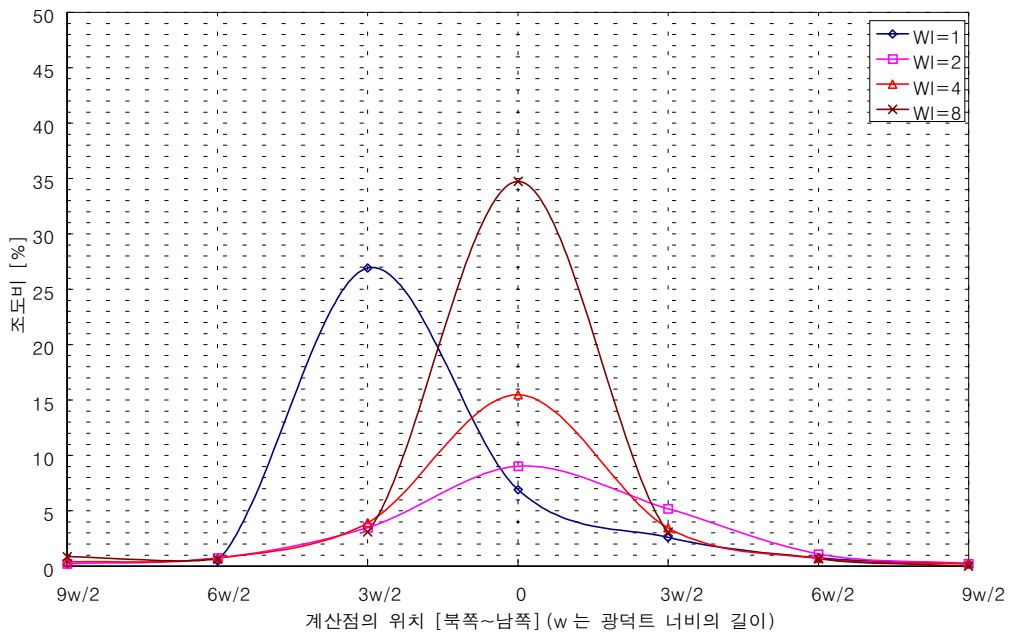
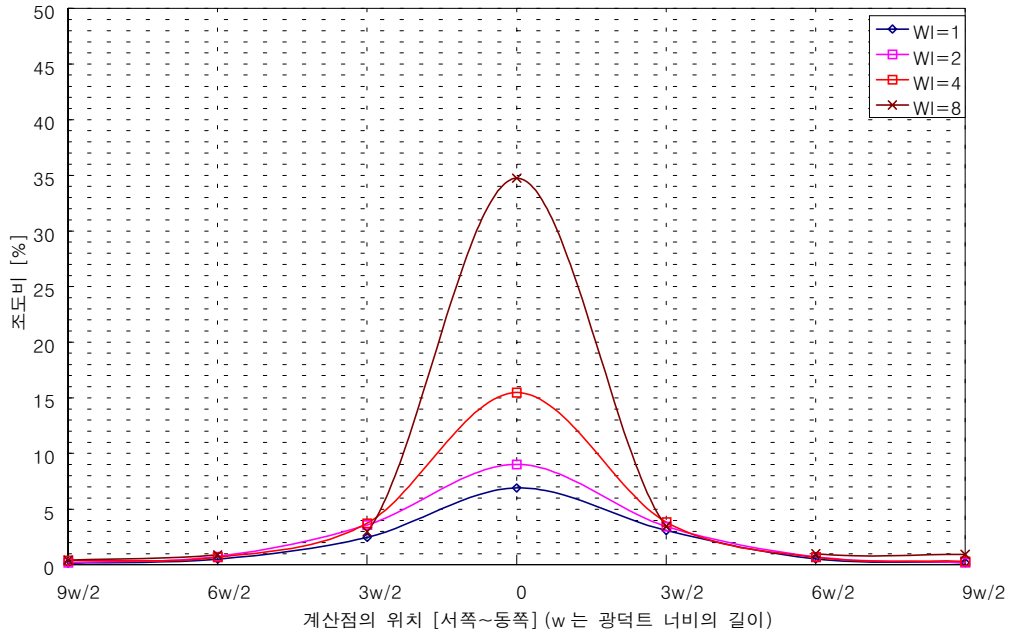
8. 12월 21일 반사율 80%



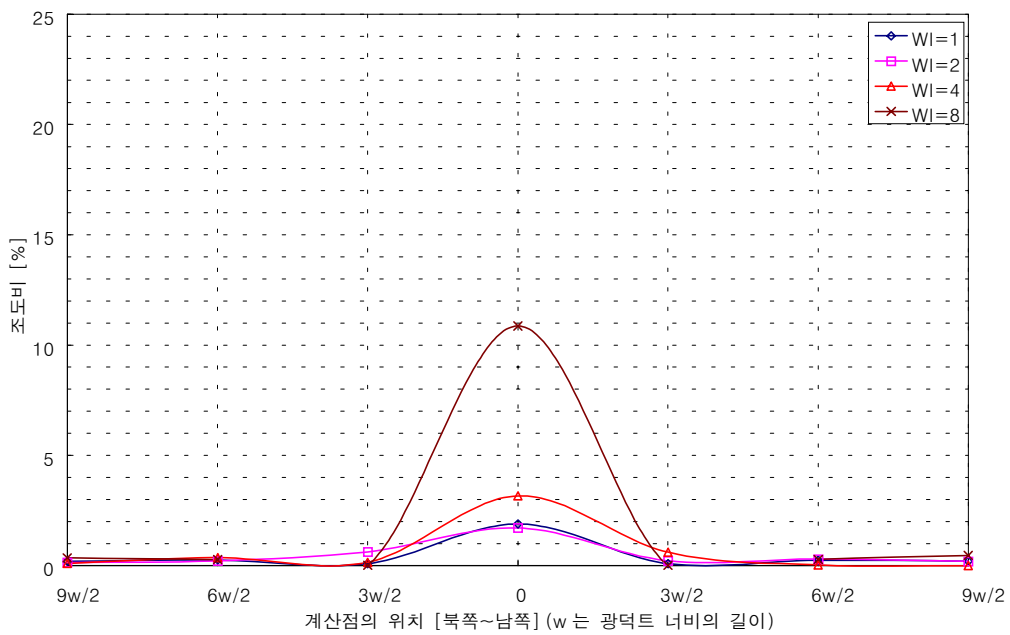
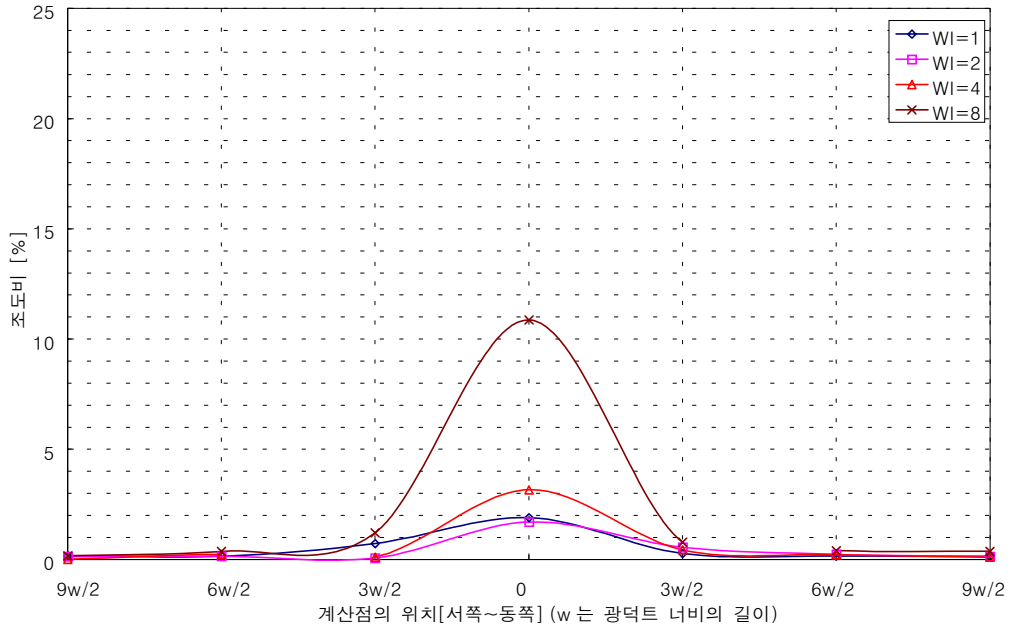
9. 12월 21일 반사율 70%

부록 2:

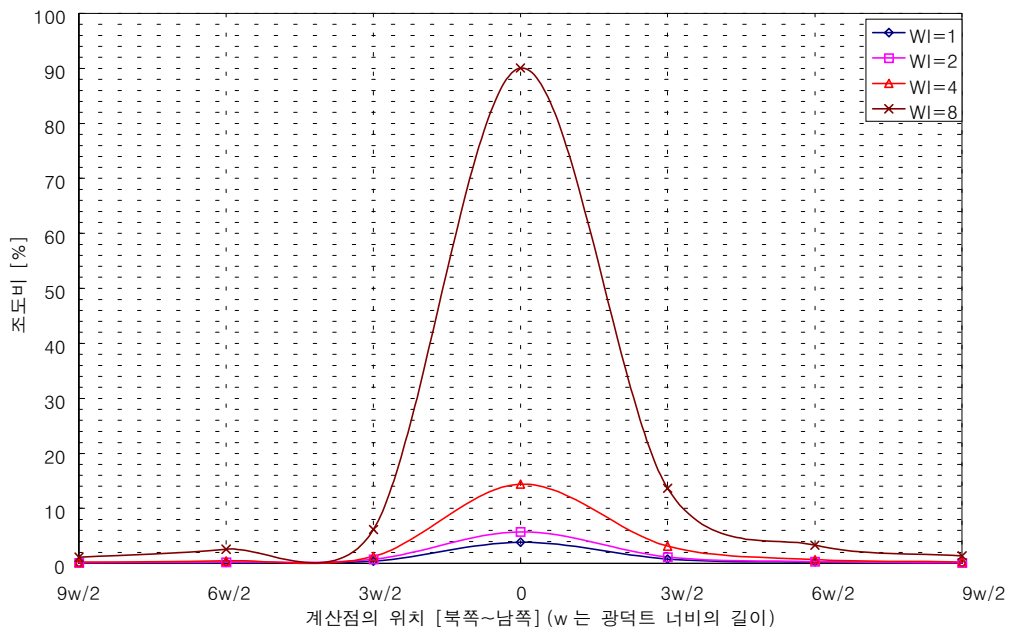
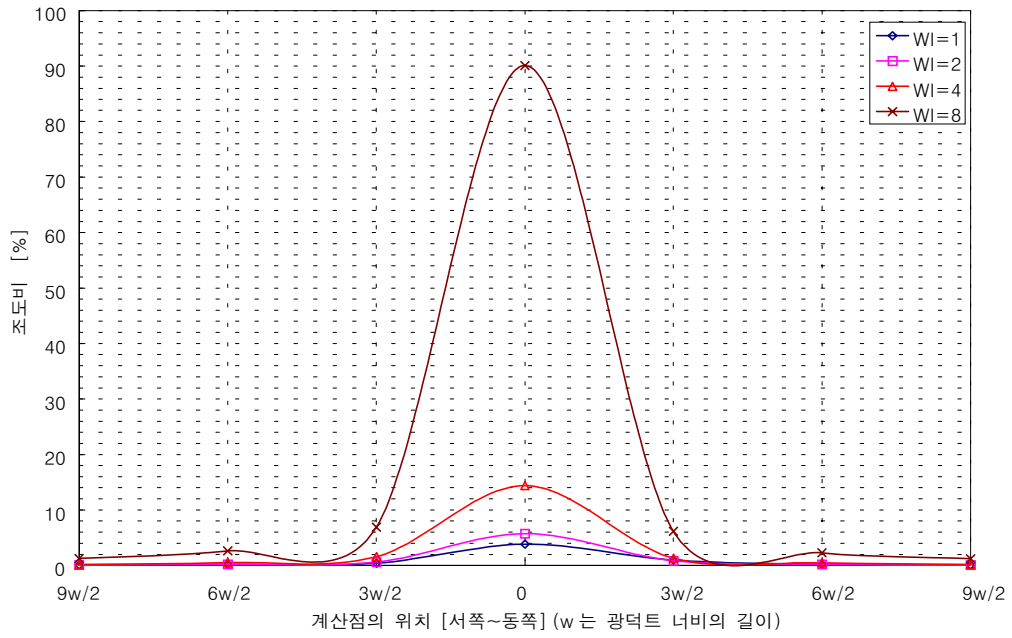
수직장방향 광덕트를 갖는 지하공간 내의 조도
[직접성분, 간접성분]



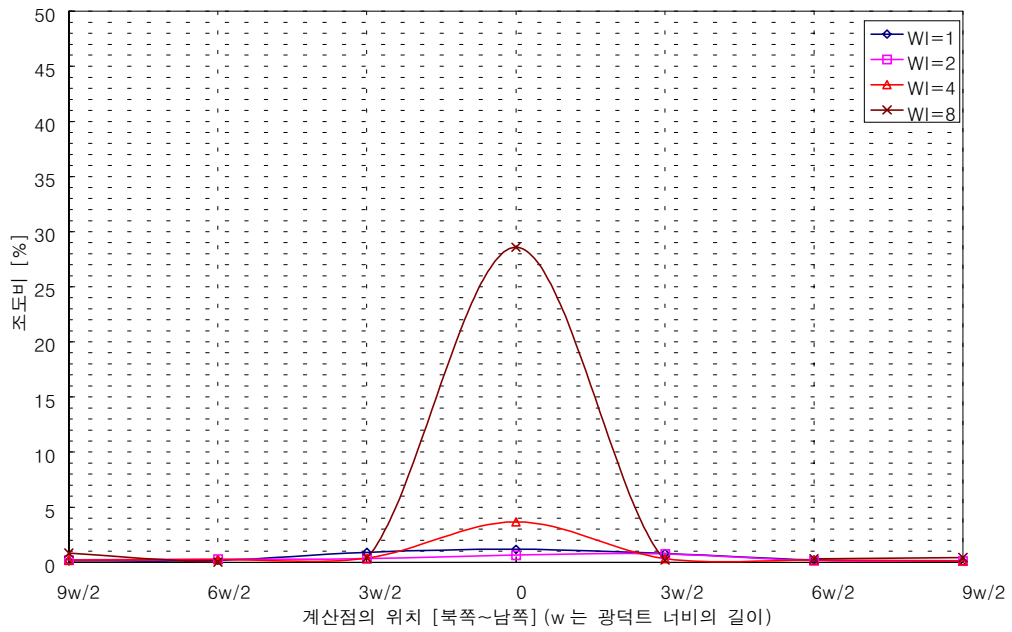
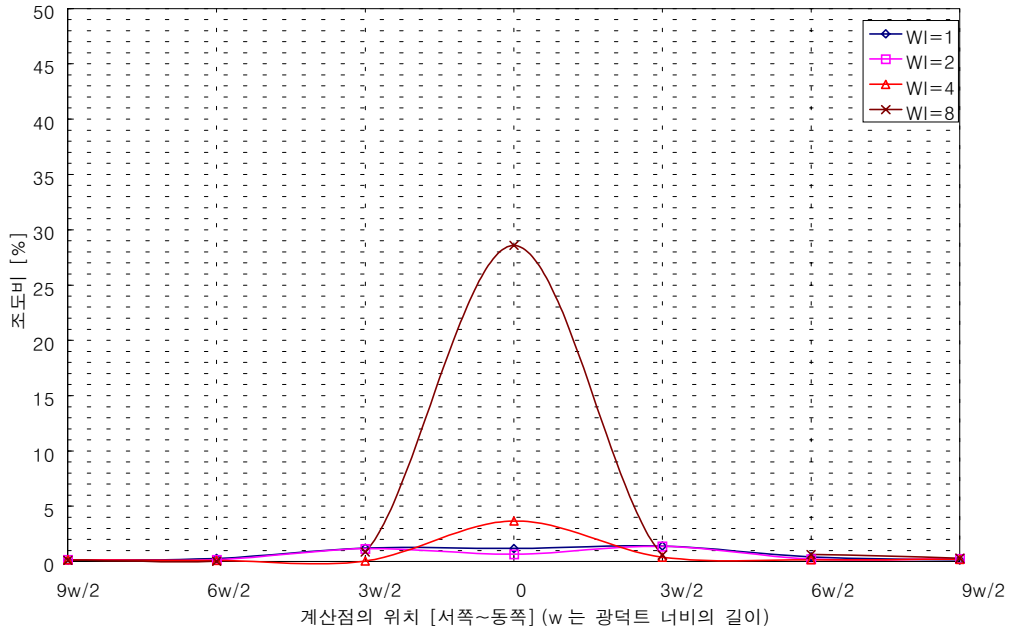
1. 실지수=2.0, 직접성분에 의한 조도비 (9월 21일 12:00)



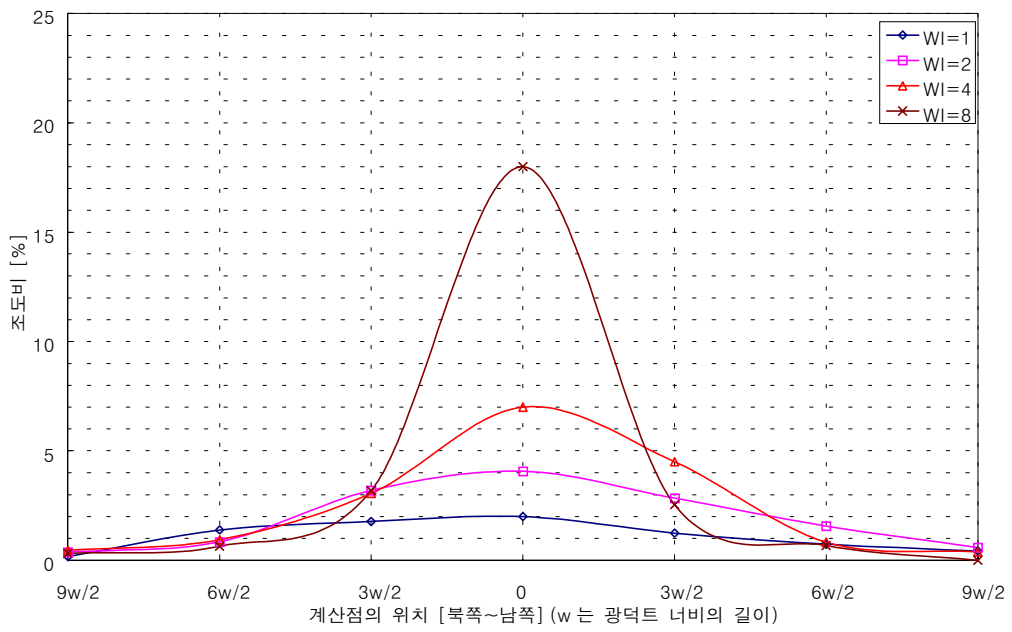
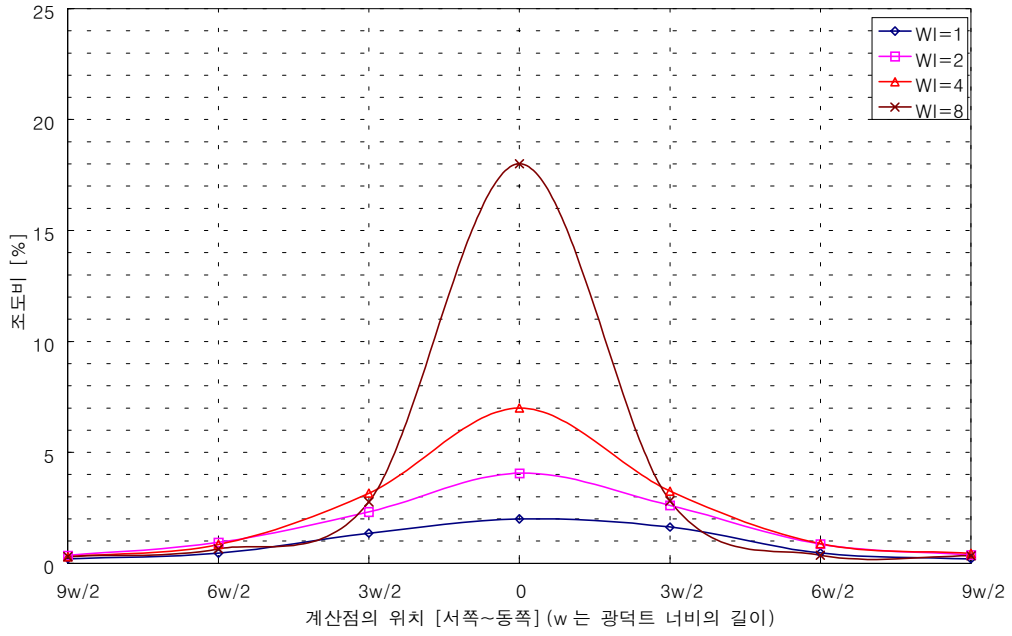
2. 실지수=2.0, 간접성분에 의한 조도비 (9 월 21 일 12:00)



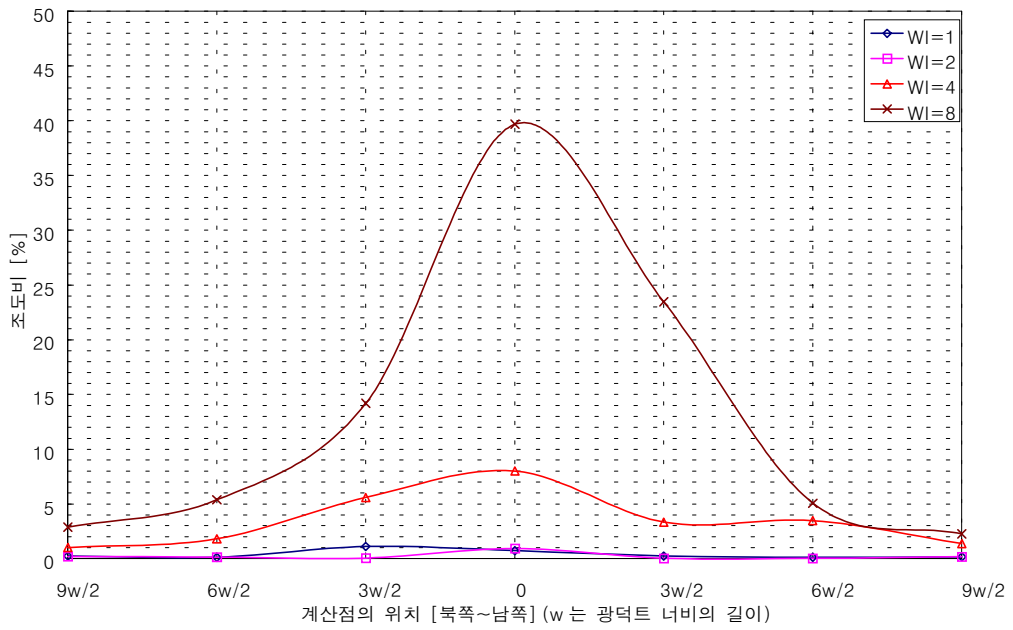
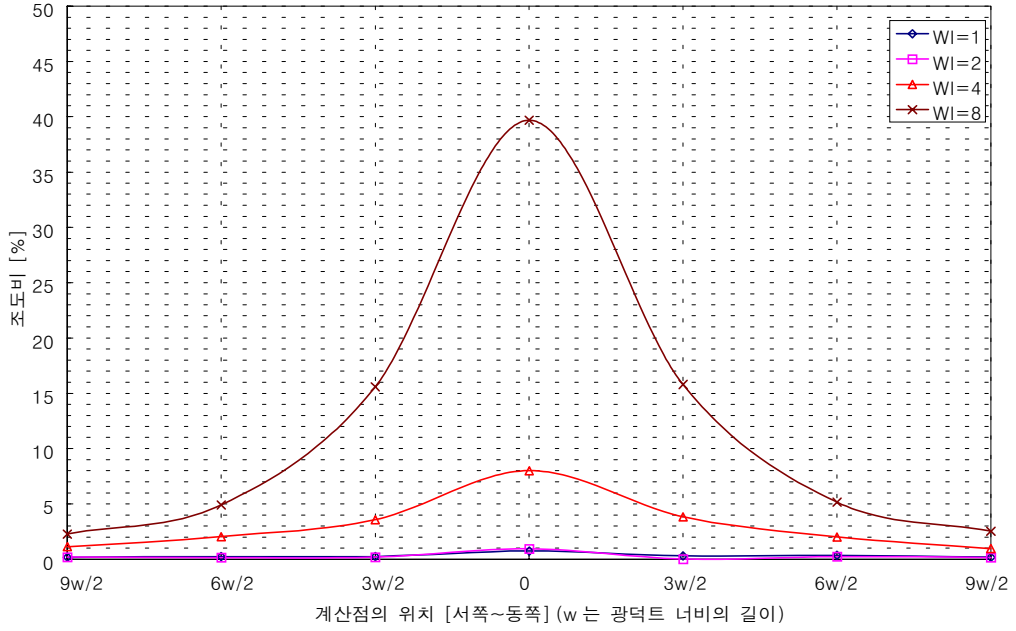
3. 실지수=1.25, 직접성분에 의한 조도비 (6 월 21 일 12:00)



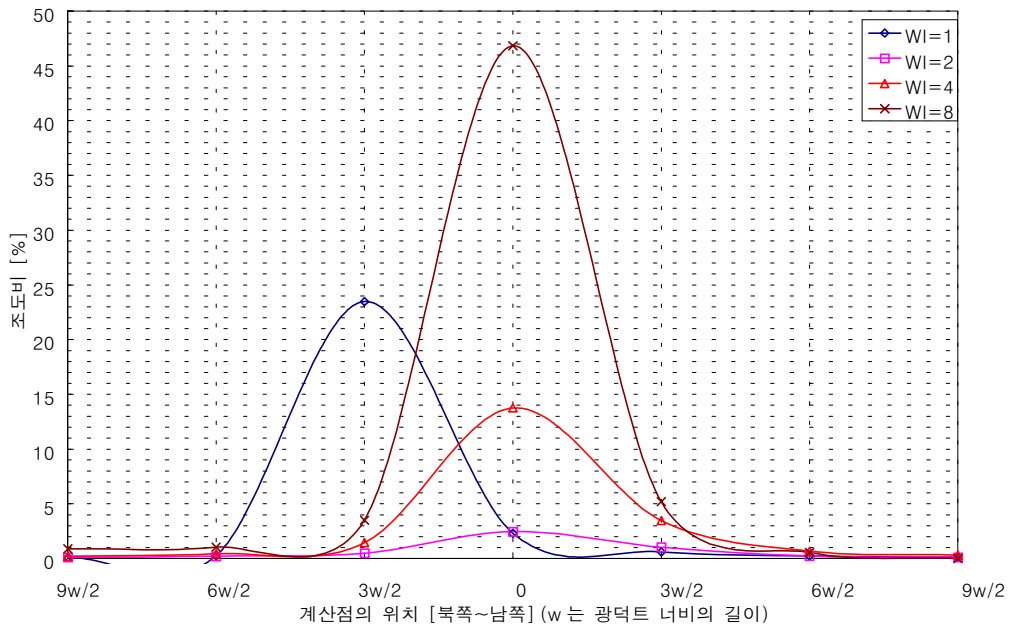
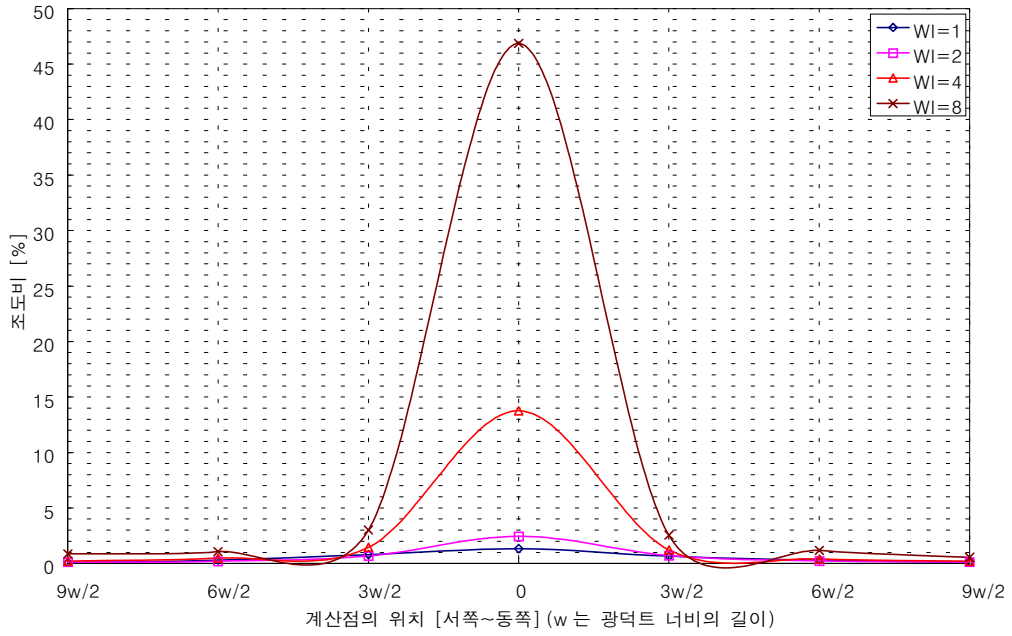
4. 실지수=.125, 간접성분에 의한 조도비 (6 월 21 일 12:00)



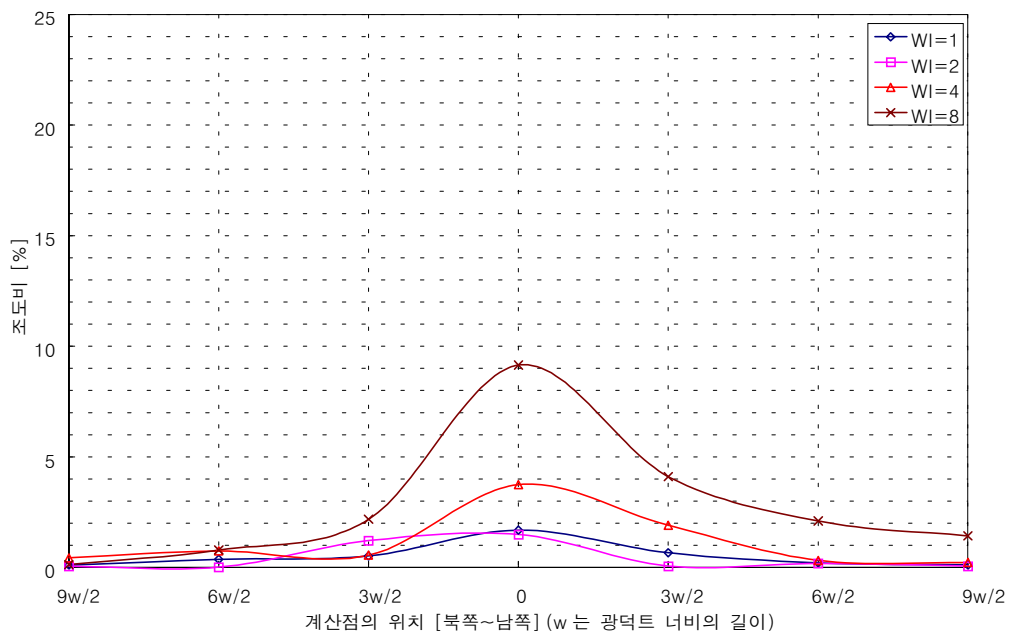
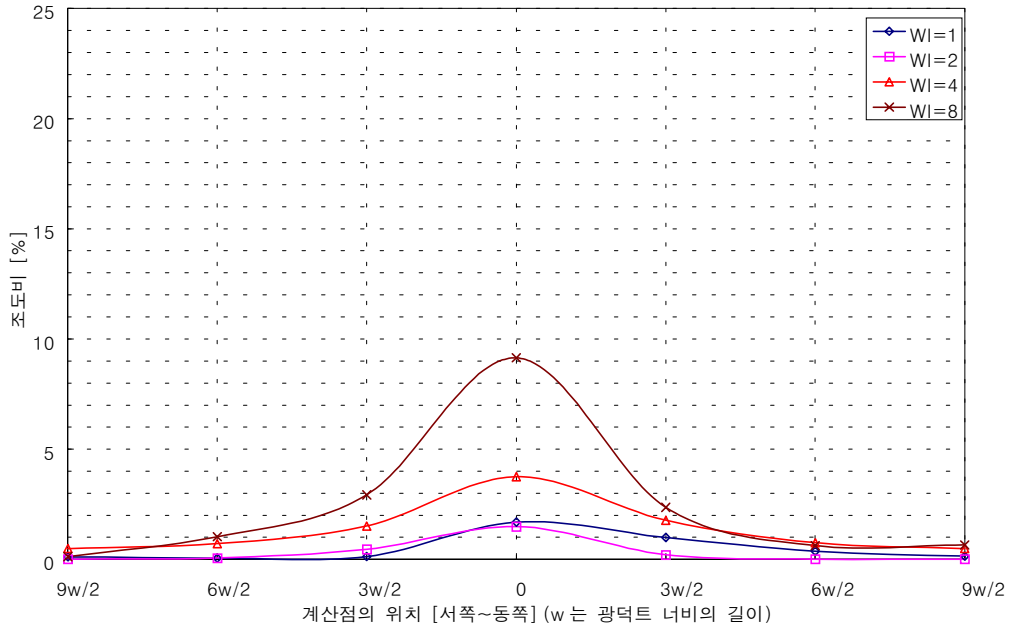
5. 실지수=1.25, 직접성분에 의한 조도비 (9 월 21 일 12:00)



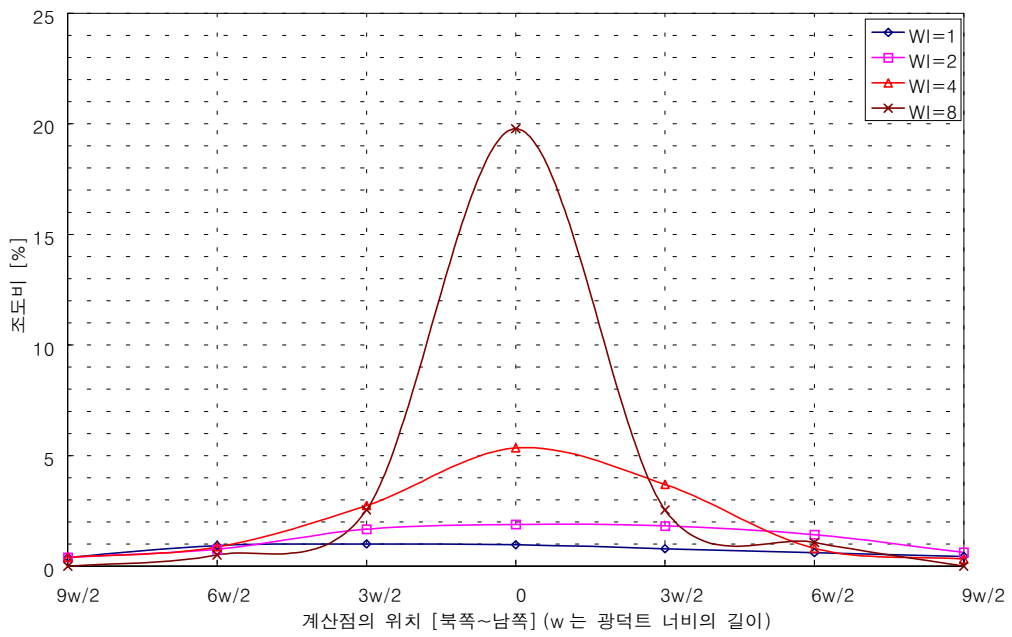
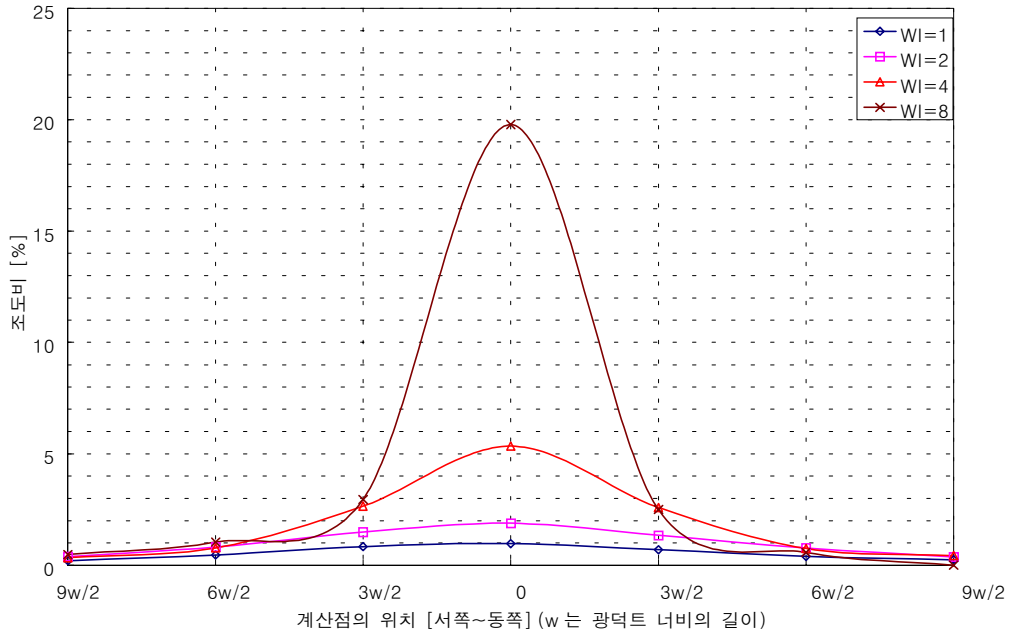
6. 실지수=1.25, 간접성분에 의한 조도비 (9 월 21 일 12:00)



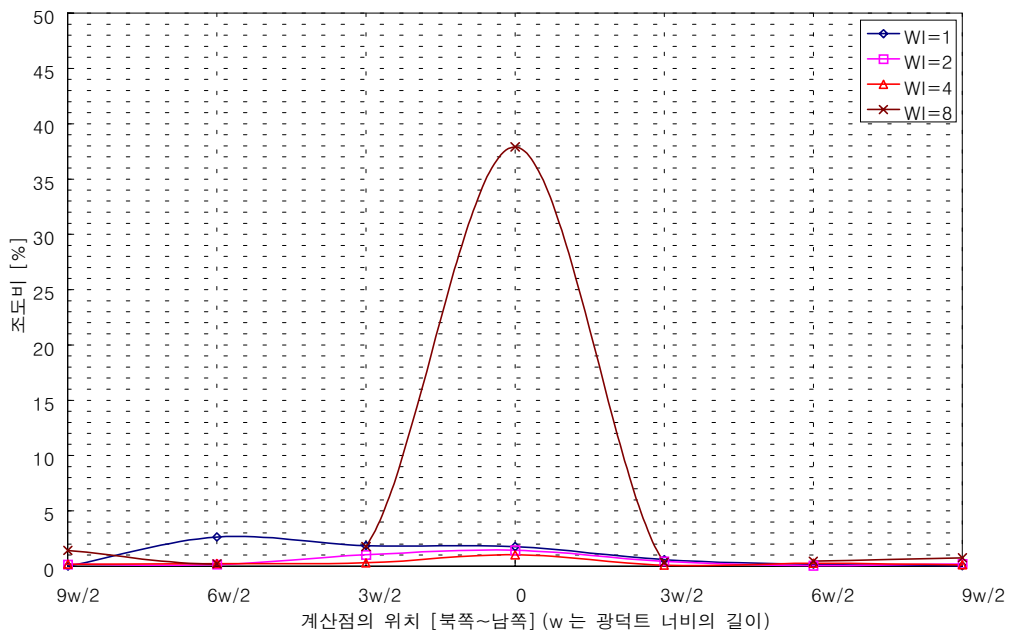
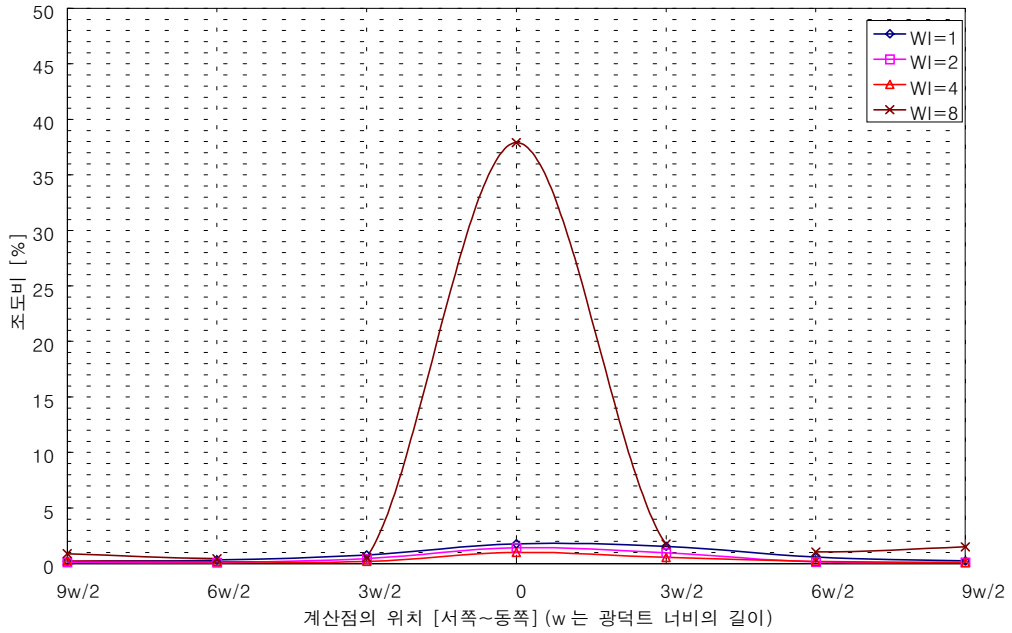
7. 실지수=1.0, 직접성분에 의한 조도비 (6월 21일 12:00)



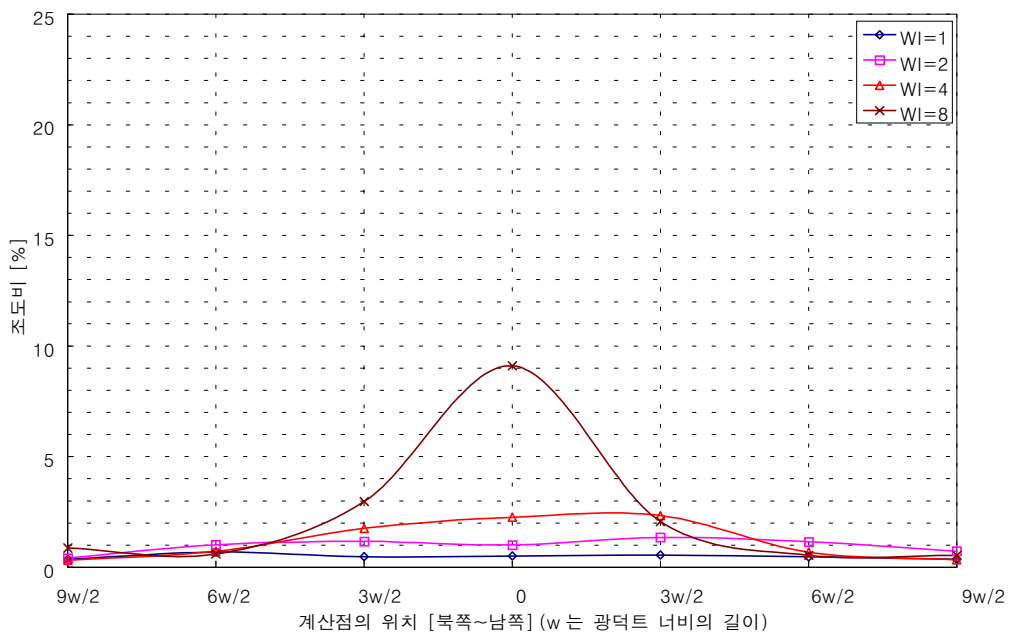
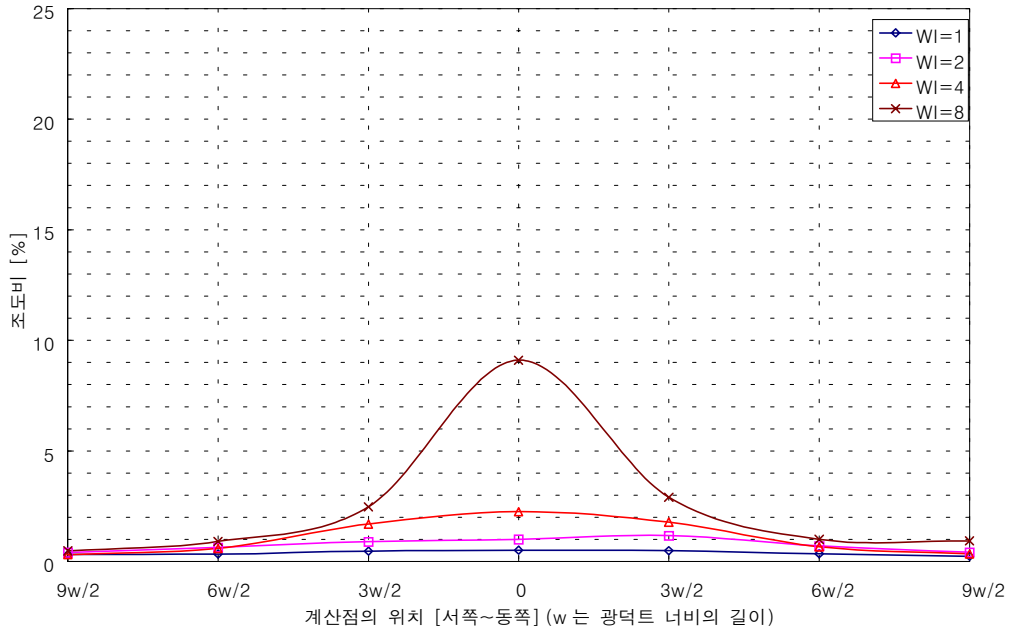
8. 실지수=.1.0, 간접성분에 의한 조도비 (6월 21일 12:00)



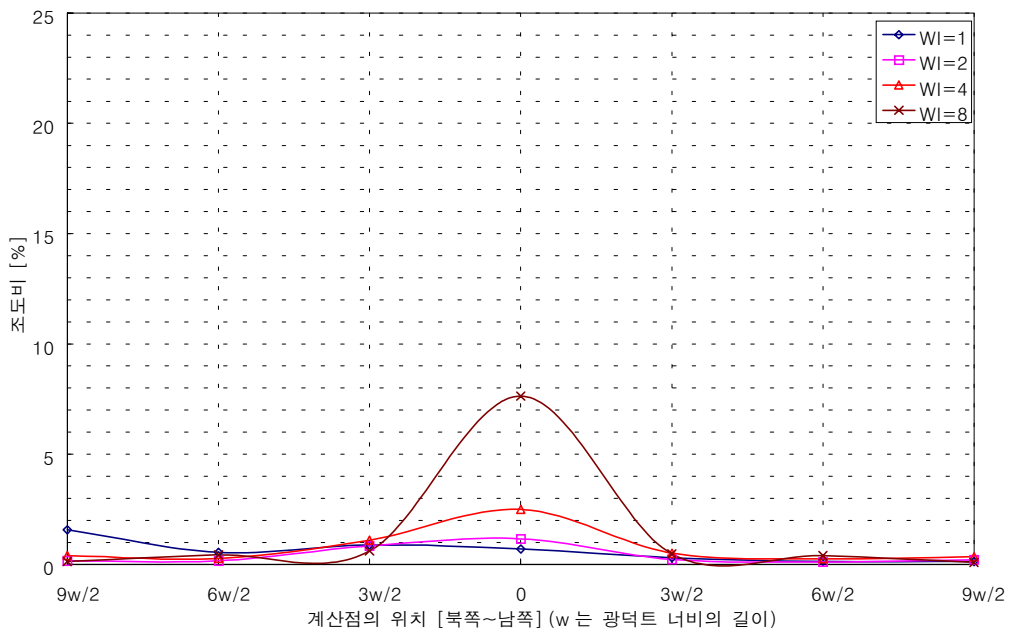
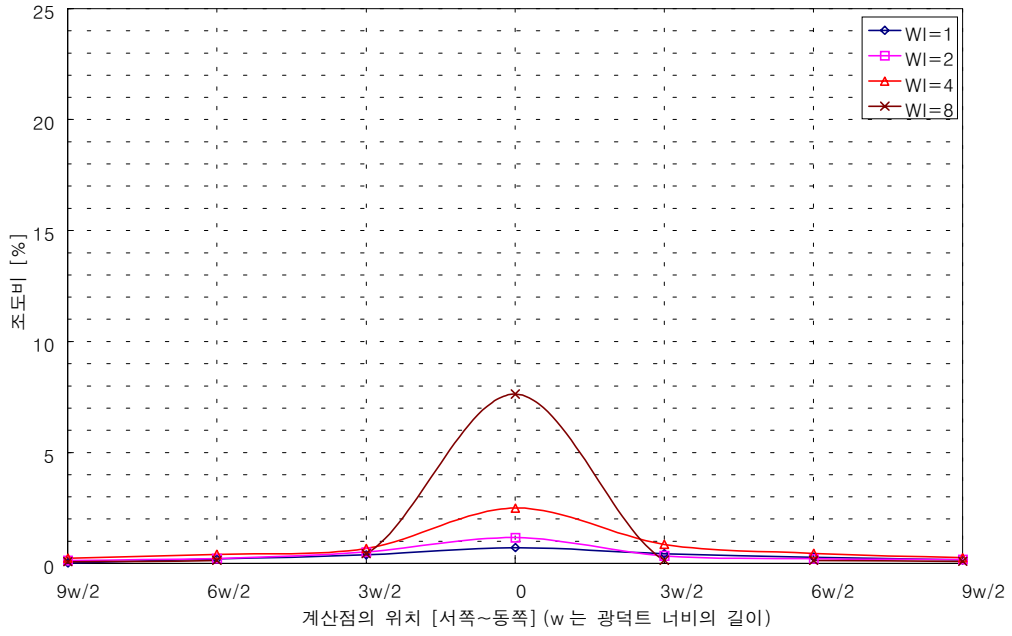
9. 실지수=1.0, 직접성분에 의한 조도비 (9월 21일 12:00)



10. 실지수=1.0, 간접성분에 의한 조도비 (9 월 21 일 12:00)



11. 실지수=0.8, 직접성분에 의한 조도비 (9월 21일 12:00)



12. 실지수=0.8, 간접성분에 의한 조도비 (9 월 21 일 12:00)